

Filament Spool Holder User Instructions

This is a fully portable and rotatable holder for filament spools. It can be easily assembled without using any fasteners like screws and nuts. You can build the spool holder yourself by following the instructions below.

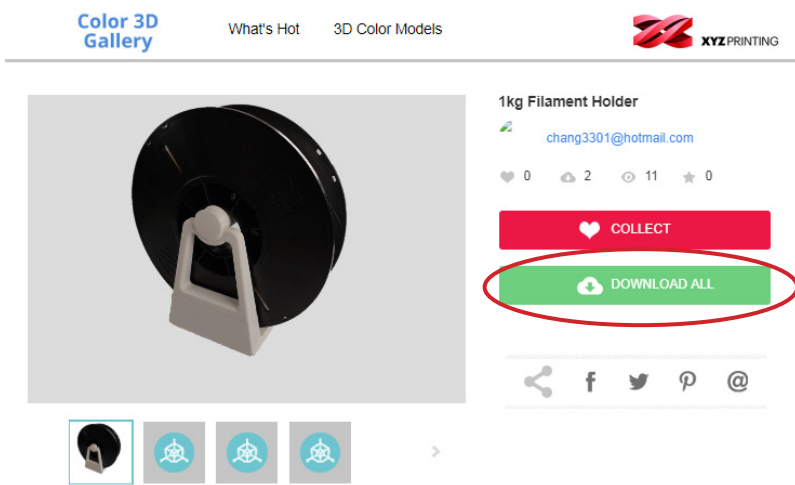
This is a dedicated spool holder for your 1kg filament and it is designed for our printer models from the Jr. Series, nano Series, and the mini Series.

Where to Download the Print File?

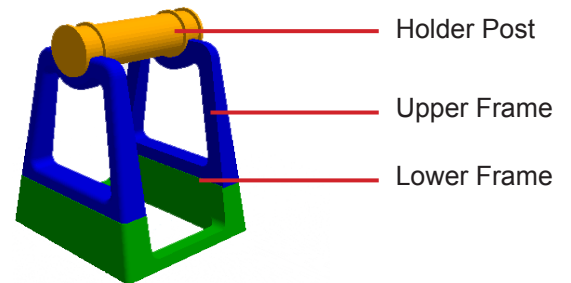
▼ 3D gallery

<https://3d-gallery.xyzprinting.com/en-US/model-detail/201810039405816>

Note : The file includes three major component parts.



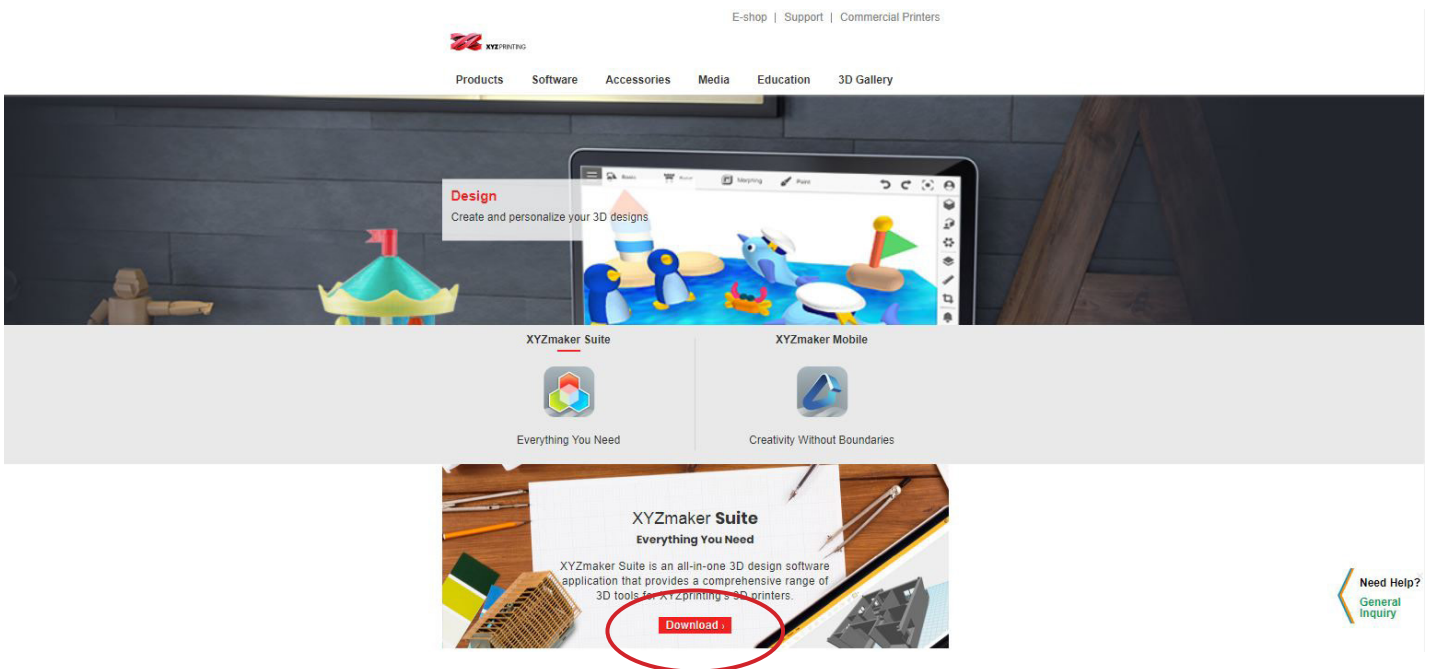
Spool Holder Structure :



How to Print?

▼ Download XYZmaker Suite. Use XYZprint to print the spool holder.

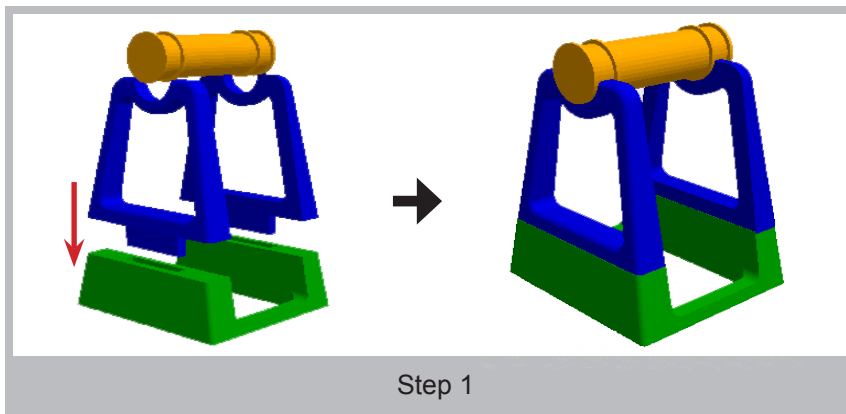
<http://www.xyzprinting.com/en-US/software-series/maker-suite/xyzmaker-suite>



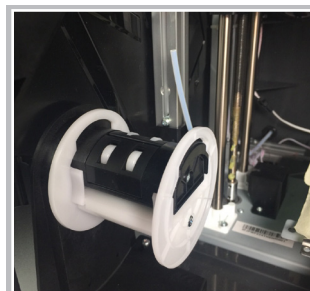
How to Assemble?

The spool holder has a simple design and can be easily assembled by following the instructions below.

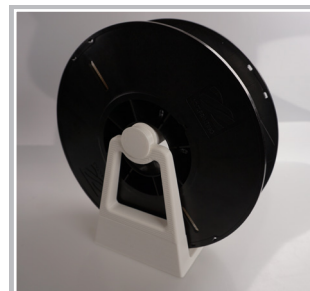
1. Use glue to combine the lower frame and upper frame.
2. Loosen the screw in the middle of the spool to remove the chip slot.
3. Mount the chip slot on the wheel inside your 3D printer.
4. Place the holder in front of the filament spool and slot the spool onto the upper frame.



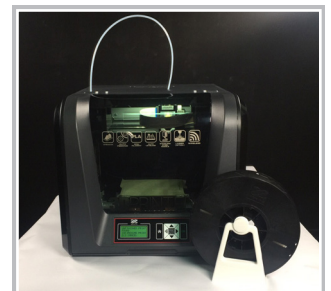
Step 2



Step 3



Step 4



Final View